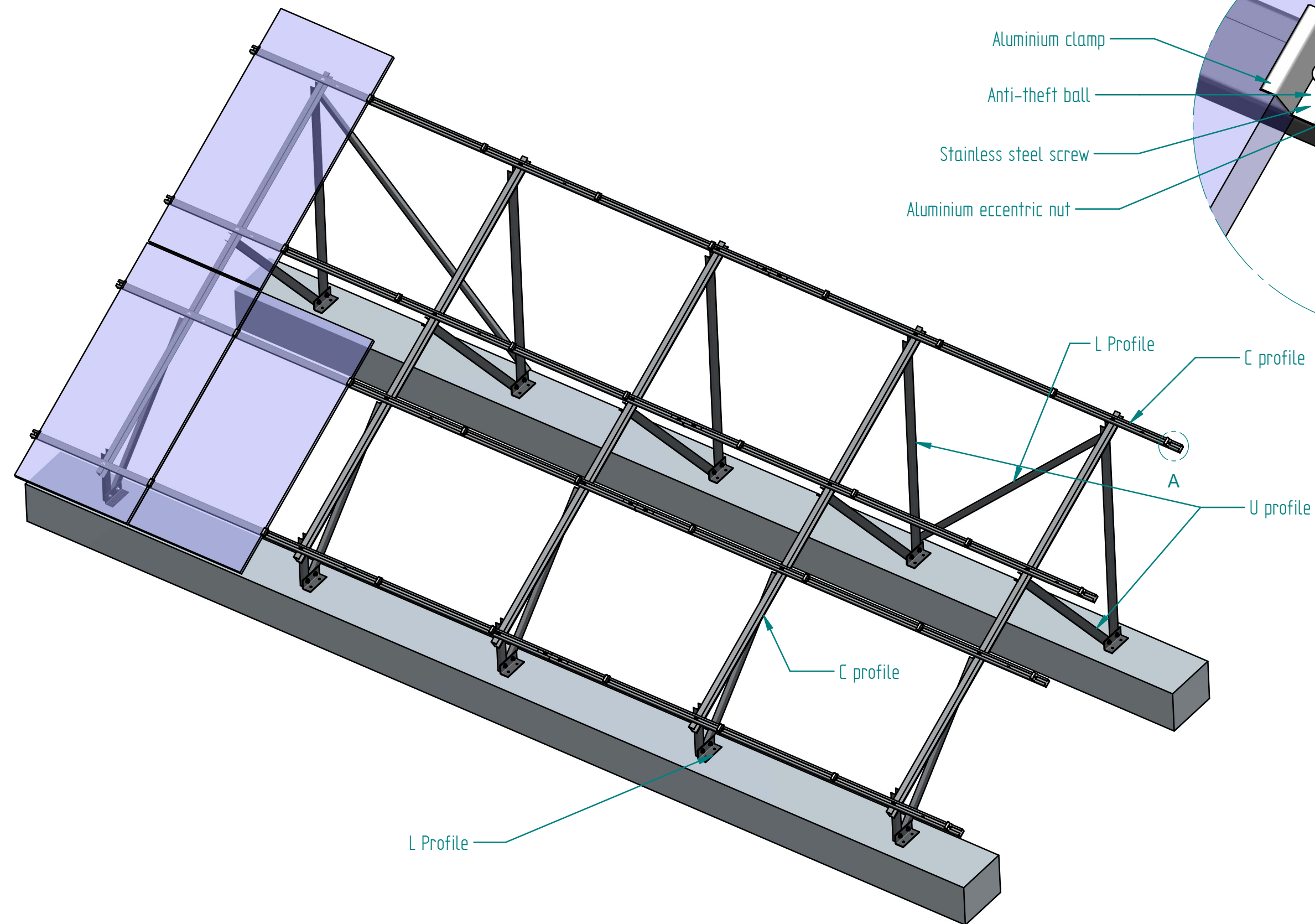
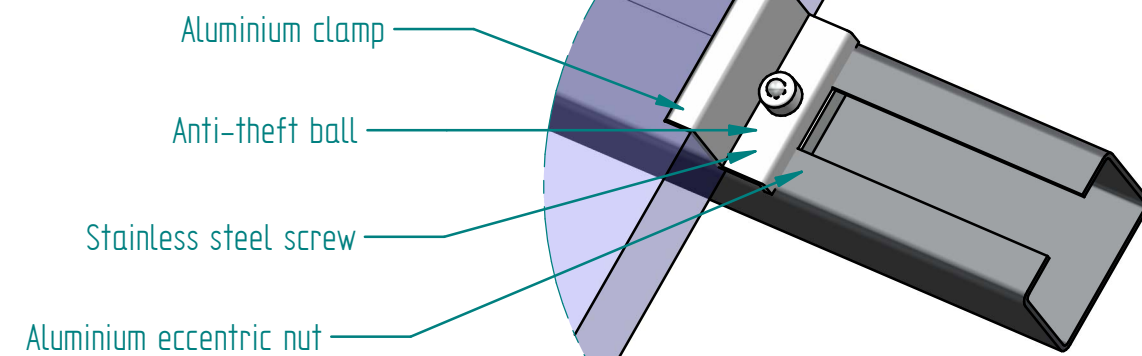


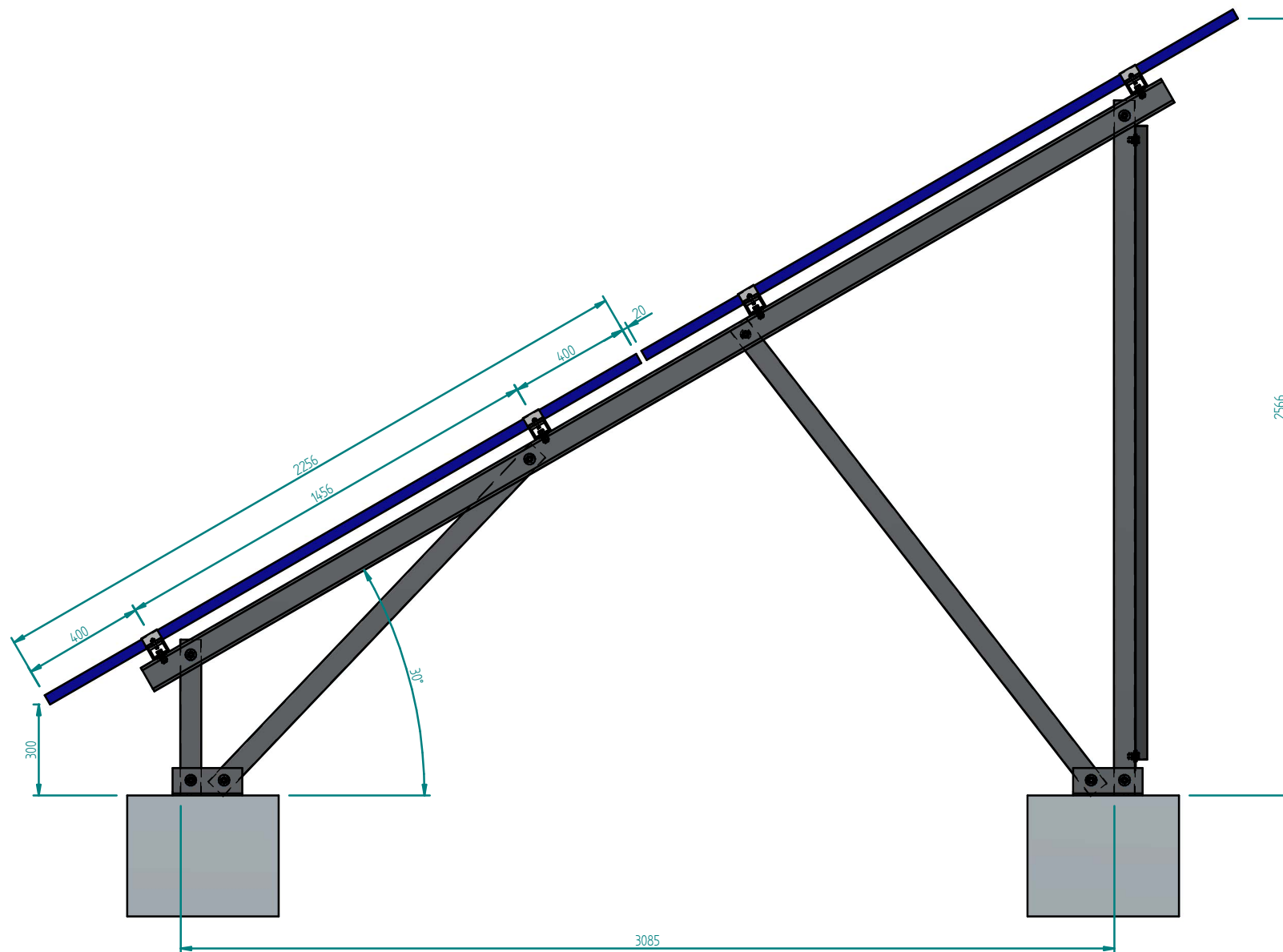
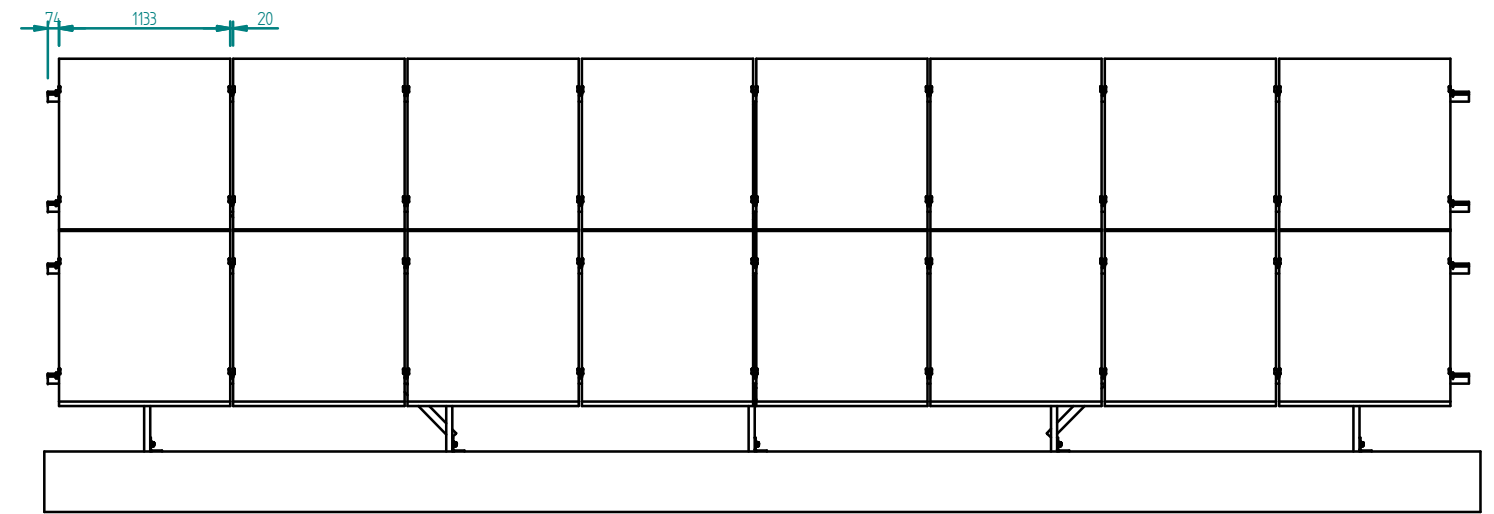
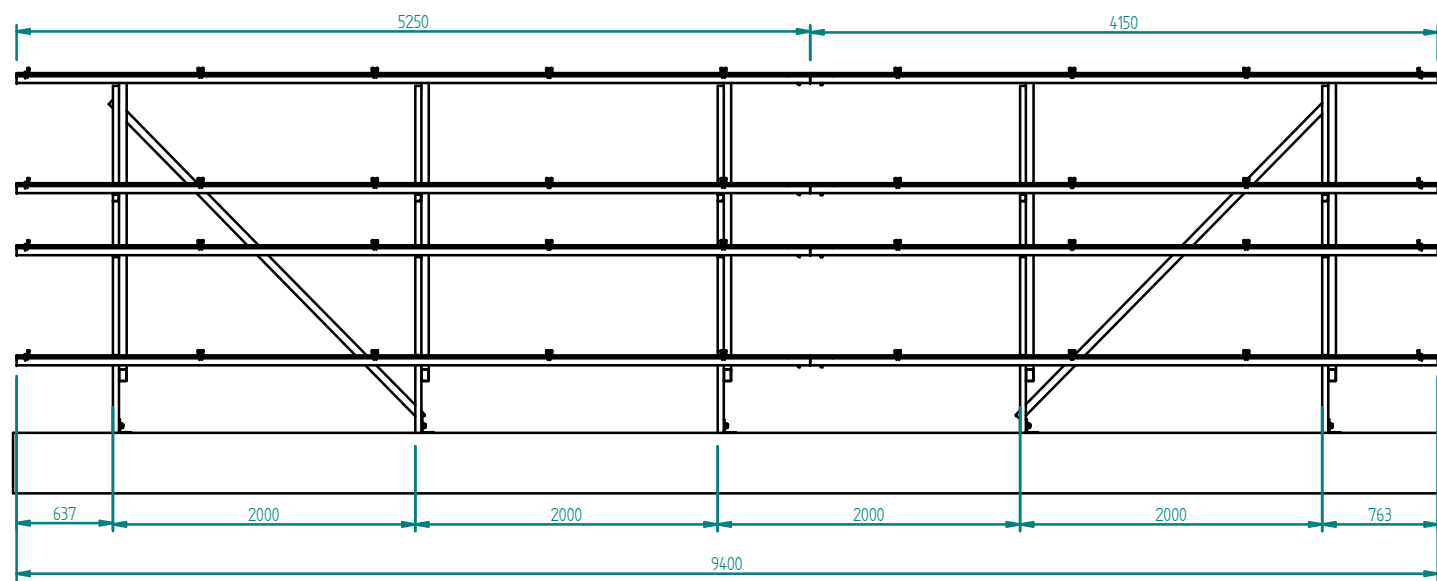
DOUBLE POLE STRUCTURE ON FOUNDATION

8x2 PORTRAIT PLACEMENT



MODULES' FIXING DETAIL A





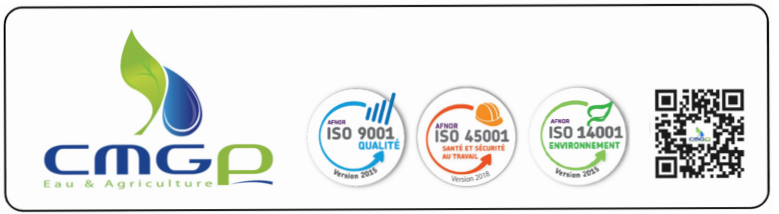
MATERIALS

BASE PLATES: steel S355 hot-dip galvanized, with certificate CE 3.1 and declaration of conformity for galvanizing according to EN 1461

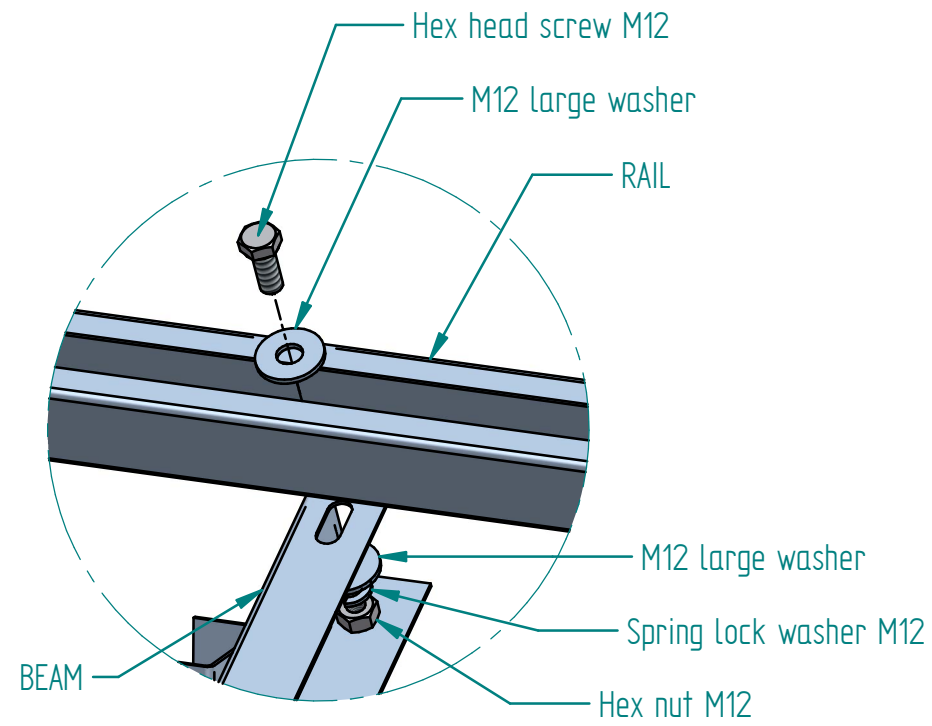
STRUCTURES: steel S350GD+ZM310 pregalvanized zinc-magnesium with certificate 3.1

BOLTERY: Stainless steel A2

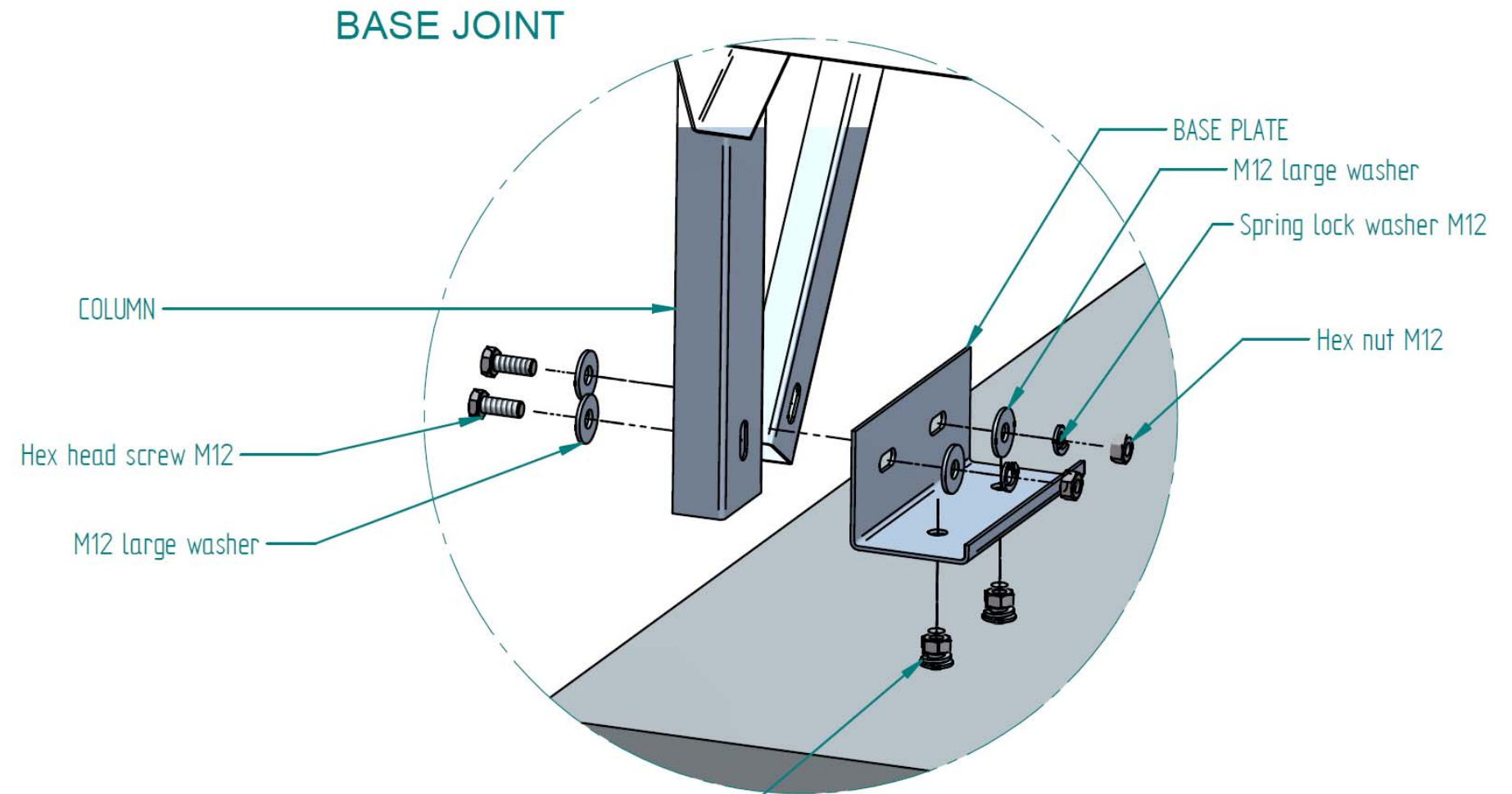
CLAMPS: aluminium with stainless steel screw and anti-theft ball



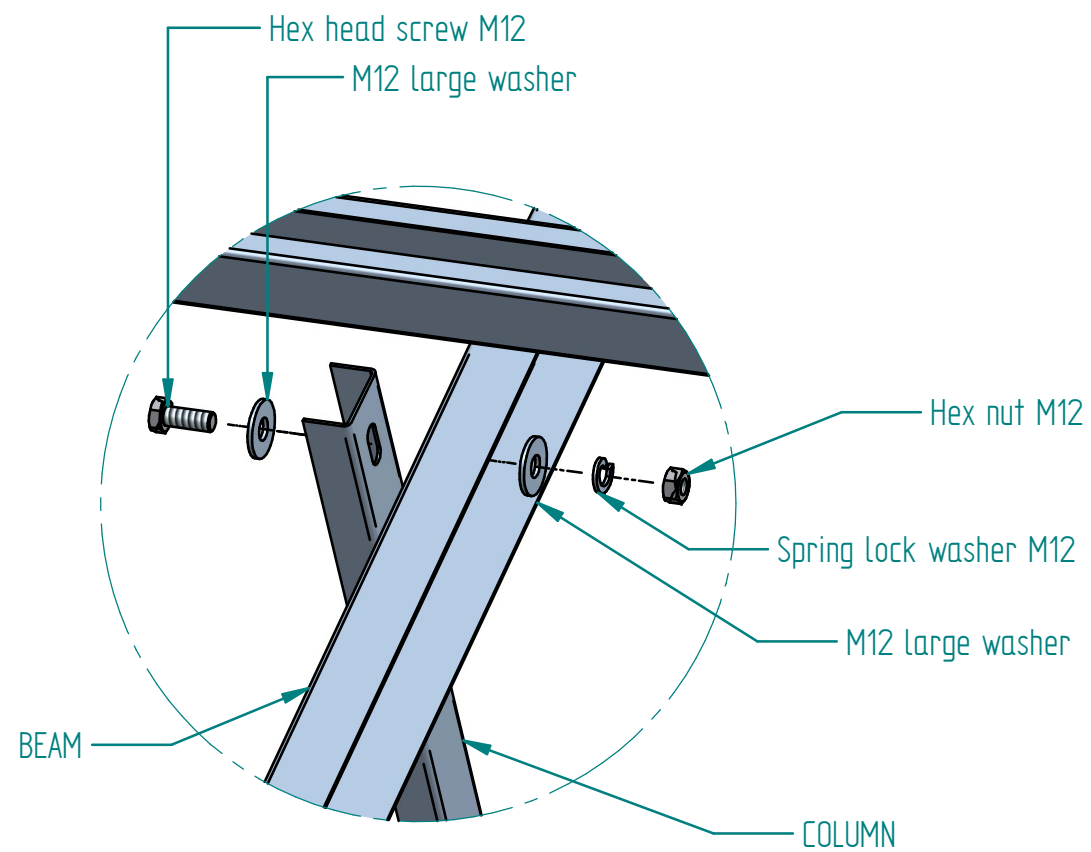
DOUBLE POLE STRUCTURE ON FOUNDATION TYPICAL DETAILS



BEAM-TO-RAIL JOINT



FIXING TO THE FOUNDATION
WITH CHEMICAL OR MECHANICAL
ANCHOR BOLT
(NOT IN ALUSISTEMI SCOPE)



BEAM-TO-COLUMN JOINT